

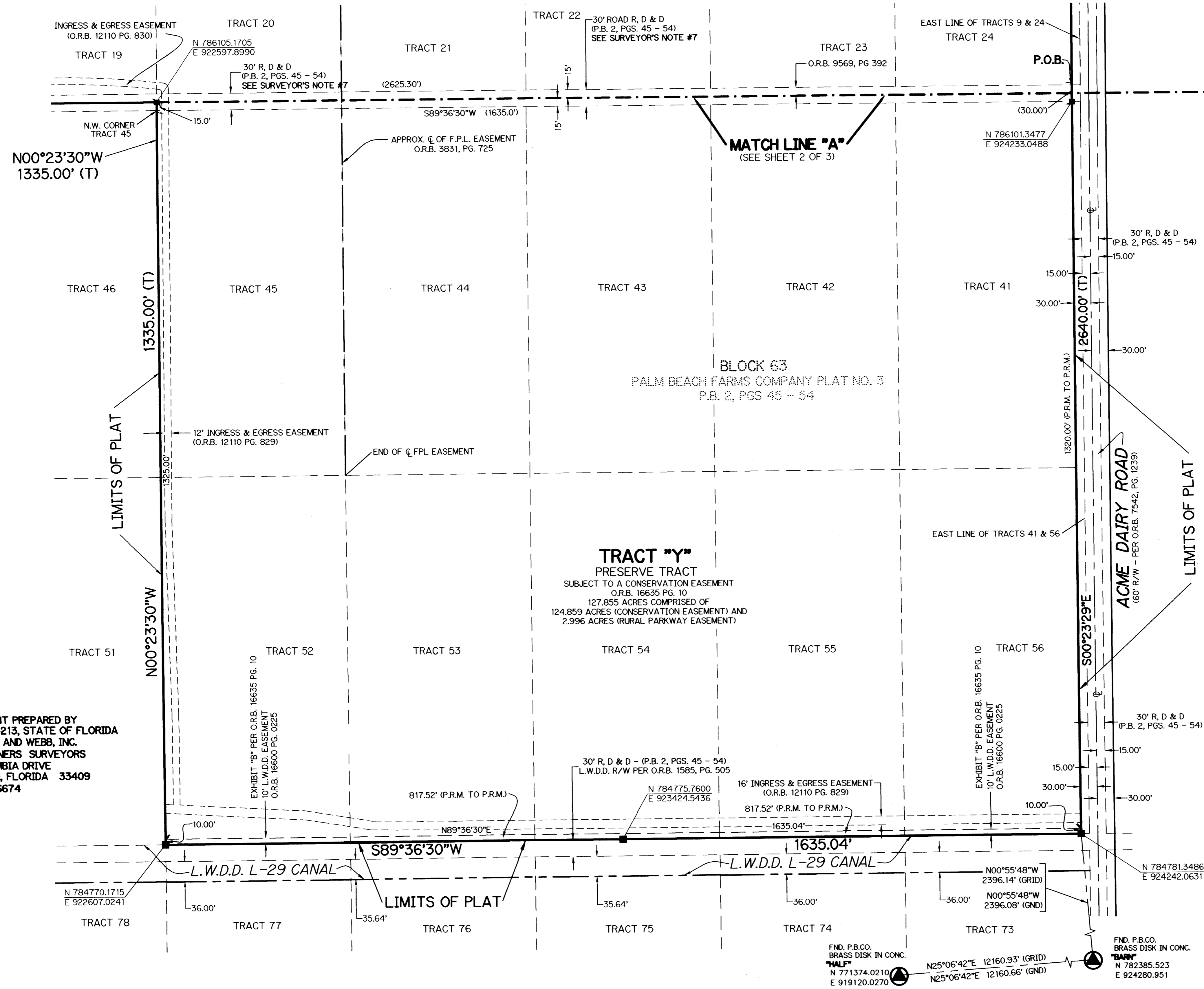
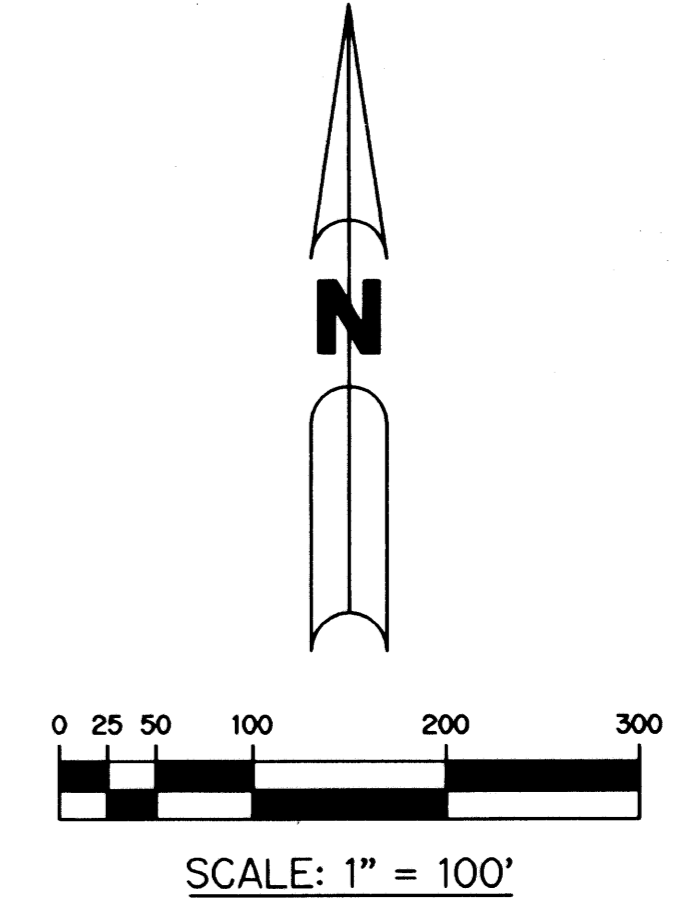
CANYON LAKES PRESERVE AREA NO. 5

BEING A REPLAT OF ALL OF TRACTS 17 THROUGH 23, 42 THROUGH 45, 52 THROUGH 55, AND A PORTION OF TRACTS 9 THROUGH 16, 24, 41, 56 AND A PORTION OF ROAD, DYKE AND DITCH RESERVATION, 30 AND 50 FEET IN WIDTH, ALL LYING WITHIN BLOCK 63, PALM BEACH FARMS COMPANY PLAT NO. 3, ACCORDING TO THE PLAT THEREOF, AS RECORDED IN PLAT BOOK 2, PAGES 45 THROUGH 54, OF THE PUBLIC RECORDS, LYING, BEING AND SITUATE IN SECTIONS 5 AND 6, TOWNSHIP 46 SOUTH, RANGE 42 EAST PALM BEACH COUNTY, FLORIDA

SHEET 3 OF 3

FEBRUARY, 2004

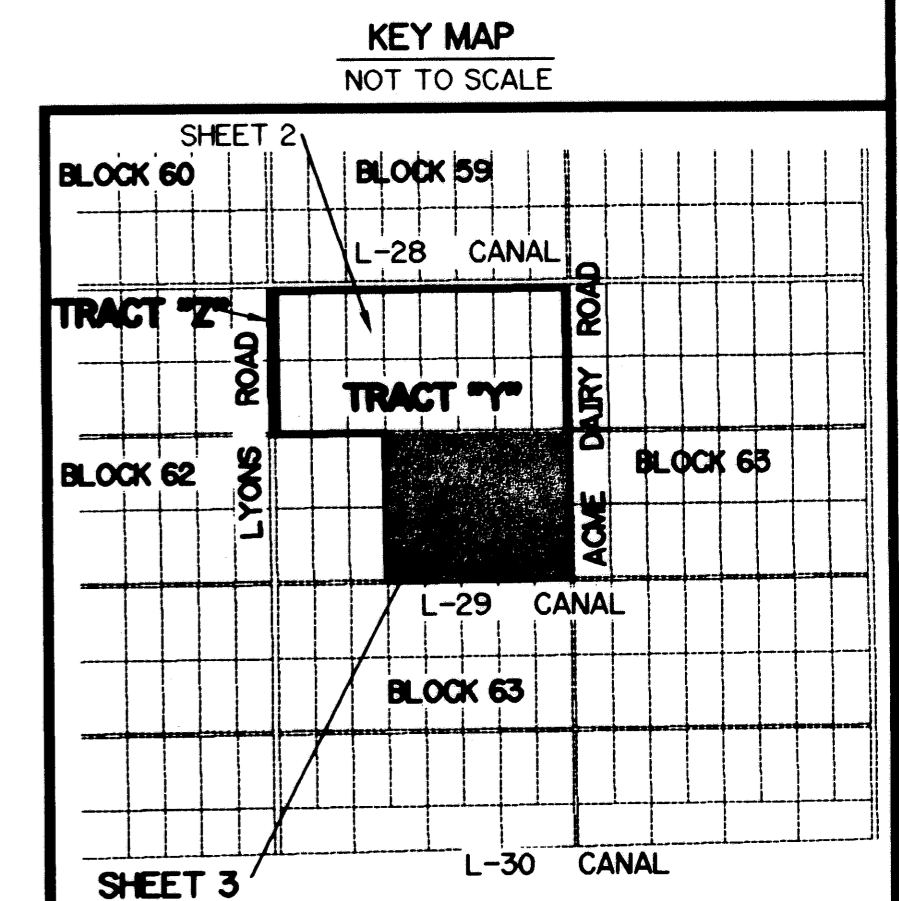
175



- LEGEND:**
- - FND CONCRETE MONUMENT
 - - SET PERMANENT REFERENCE MONUMENT, L.B. #6674
 - - PERMANENT CONTROL POINT, L.B. #6674
 - Δ - DELTA ANGLE
 - AC - ACRES
 - BE - BUFFER EASEMENT
 - CB - CHORD BEARING
 - CH - CHORD
 - CL - CENTERLINE
 - DB - DEED BOOK
 - DE - DRAINAGE EASEMENT
 - L - ARC LENGTH
 - L.A.E. - LIMITED ACCESS EASEMENT
 - L.M.A.E. - LAKE MAINTENANCE ACCESS EASEMENT
 - L.M.E. - LAKE MAINTENANCE EASEMENT
 - L.M.E. - LAKE MAINTENANCE EASEMENT
 - L.S.E. - LIFT STATION EASEMENT
 - L.W.D.D. - LAKE WORTH DRAINAGE DISTRICT
 - NR - NOT RADIAL
 - NT.S. - NOT TO SCALE
 - O.R.B. - OFFICIAL RECORD BOOK
 - P.B. - PLAT BOOK
 - P.B.C.U.E. - PALM BEACH COUNTY UTILITY EASEMENT
 - P.C. - POINT OF CURVATURE
 - P.I. - POINT OF INTERSECTION
 - PGS. - PAGES
 - P.S.M. - PROFESSIONAL SURVEYOR AND MAPPER
 - R - RADIUS
 - N 737648.0171 - DENOTES STATE PLANE COORDINATES
 - E 905258.2326
 - R, D & D - ROAD, DYKE AND DITCH RESERVATION
 - RAD. - RADIAL
 - R/W - RIGHT-OF-WAY
 - SF. - SQUARE FEET
 - S.T. - SURVEY TIE
 - UE. - UTILITY EASEMENT
 - P.O.B. - POINT OF BEGINNING
 - P.O.C. - POINT OF COMMENCEMENT
 - T - TOTAL
 - () - DIMENSION PER DESCRIPTION

NOTE:
 COORDINATES SHOWN ARE GRID COORDINATES
 DATUM = NAD 83 (1990 ADJUSTMENT)
 ZONE = FLORIDA EAST ZONE
 LINEAR UNIT = U.S. SURVEY FEET
 COORDINATE SYSTEM = 1983 STATE PLANE TRANSVERSE MERCATOR PROJECTION
 ALL DISTANCES ARE GROUND
 SCALE FACTOR = 1.0000236
 NO ROTATION = (GRID BEARING TO PLAT BEARING)

THIS INSTRUMENT PREPARED BY
 PERRY C. WHITE, P.S.M. 4213, STATE OF FLORIDA
 LAWSON, NOBLE AND WEBB, INC.
 ENGINEERS PLANNERS SURVEYORS
 420 COLUMBIA DRIVE
 WEST PALM BEACH, FLORIDA 33409
 LB-6674



SUBDIVISION CANYON LAKES PRESERVE AREA NO. 5
 BOOK 101
 FLOOD MAP # 2004
 ZONING PDID
 QUAD # 051
 SS
 TAZ 199
 PUB NAME FOGG NORTH